

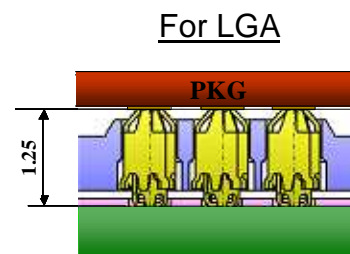
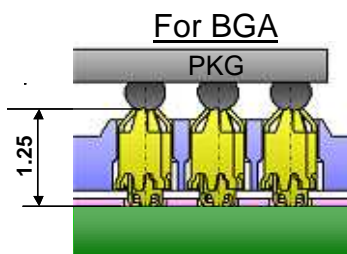
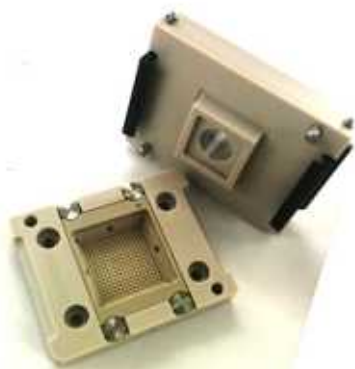
High Frequency Test Solution

Short Length Type Spring probe Pin

A probe pin that has achieved L=1.25mm test height.

[Specifications and Features]

- Pitch: 0.8 mm pitch or over
- Test length: 1.25 mm
- Operation Stroke: Device side 0.25 mm, PCB side 0.10mm
- Contact force: 23 gf/pin

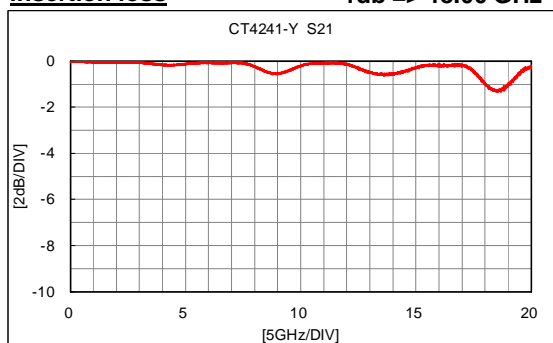


Test image

(Unit:mm)

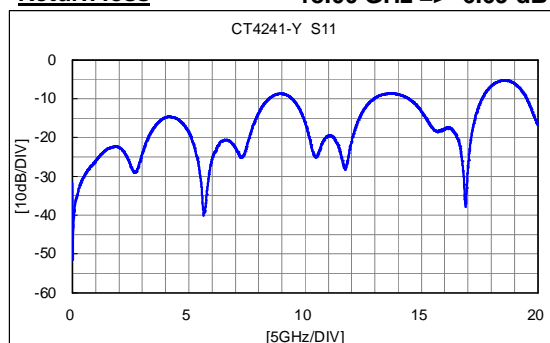
Insertion loss

-1db => 18.00 GHz



Return loss

18.00 GHz => -6.69 dB



* The above values are reference values.

《Contact Us》 URL: <http://www.yamaichi.co.jp>

YAMAICHI ELECTRONICS CO., LTD. Head Office 6F Technoport Mitsui Seimei Bldg. 2-16-2, Minamikamata, Ota-ku, Tokyo 144-8566, JAPAN
Tel: +81-3-6715-9044 Fax: +81-3-3734-0120

Osaka Branch Office 9F Central Shin-Osaka Bldg., 4-5-36 Miyahara, Yodogawa-ku Osaka-shi, Osaka 532-0003, JAPAN
Tel: +81-6-6396-6191 Fax: +81-6-6396-6192

Kumamoto Branch Office 8F Kosugi Fudosan Suido-cho Bldg., 5-21 Suido-cho, Chuo-ku, Kumamoto-shi, Kumamoto 860-0844, JAPAN
Tel: +81-96-323-5800 Fax: +81-96-323-5803

The contents of this catalog are subject to change without notice for product improvements. All system names and product names in this catalog are trademarks or registered trademarks of respective development manufacturers. Basically, no TM (R) marks are used in the text.